



# THE FIRST CLASS

KEN CORPORATION PRESENTS

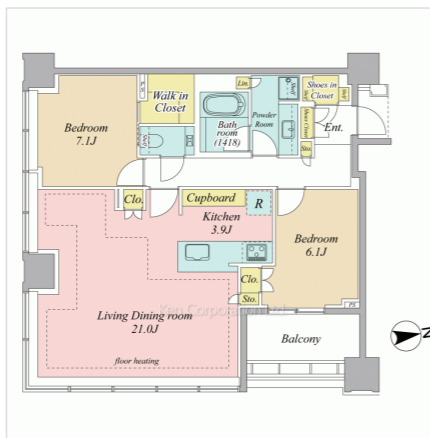
Dec 2023

Ken Corporation has a wide variety of high-grade condominiums in the central Tokyo area, as well as information on privately held properties not listed on other websites. Please feel free to contact us for more information.  
[Notion] Listing is current as of November 28, 2023. | Ad in production Please forgive us in case it has already been sold.

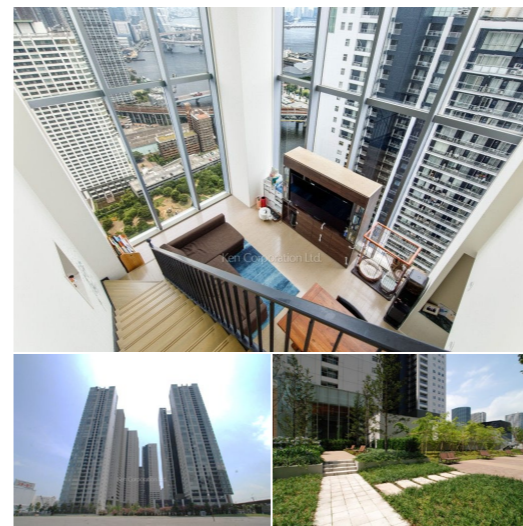


## Shirokane The Sky East 38 F

2 LDK / 85.78 sq.m | 370,000,000 JPY

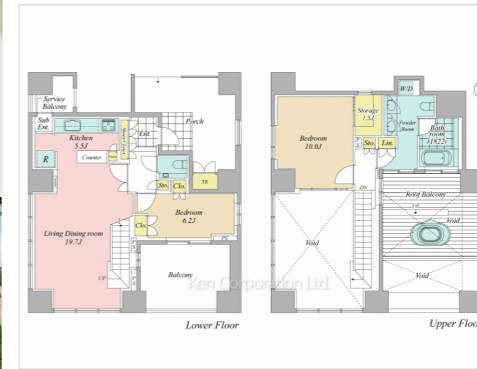


[Address] Shirokane 1-chome, Minato-ku, Tokyo  
[Access to] - Nanboku Line Shirokane-takanawa Sta. / 3 min. walk  
- Toei Oedo Line Azabu-juban Sta. / 12 min. walk  
[Construction] Level 38 of 45 story building Reinforced Concrete  
[Completion] February 2023 Completed  
[Land Rights] Ownership  
[Common Expense Fees] - Management Fee : 33,144 JPY / month  
- Building Repair Fund : 11,067 JPY / month



## World City Towers Capital Tower 8 40-41F

2 LDK / 100.72 sq.m | 270,000,000 JPY



[Address] Kounan 2-chome, Minato-ku, Tokyo  
[Access to] - Yamanote Line Shinagawa Sta. / 14 min. walk  
- Tokyo-monorail Line Tennozu-ise Sta. / 6 min. walk  
[Construction] Level 40-41 of 42 story building Reinforced Concrete  
[Completion] October 2006 Completed  
[Land Rights] Ownership  
[Common Expense Fees] - Management Fee : 20,020 JPY / month  
- Building Repair Fund : 30,470 JPY / month

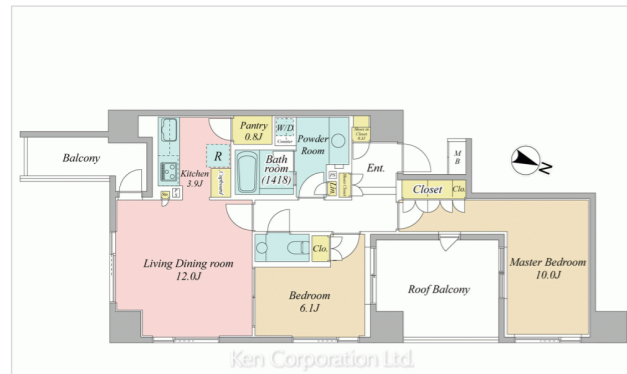


## The Parkhouse Mita Garden Residence And Tower Residence 5F

3 LDK / 83.98 sq.m | 248,000,000 JPY



[Address] Mita 5-chome, Minato-ku, Tokyo  
[Access to] - Nanboku Line Shirokane-takanawa Sta. / 8 min. walk  
- Toei Oedo Line Azabu-juban Sta. / 9 min. walk  
[Construction] Level 5 of 22 story building Reinforced Concrete  
[Completion] October 2021 Completed  
[Land Rights] Ownership  
[Common Expense Fees] - Management Fee : 33,680 JPY / month  
- Building Repair Fund : 8,400 JPY / month

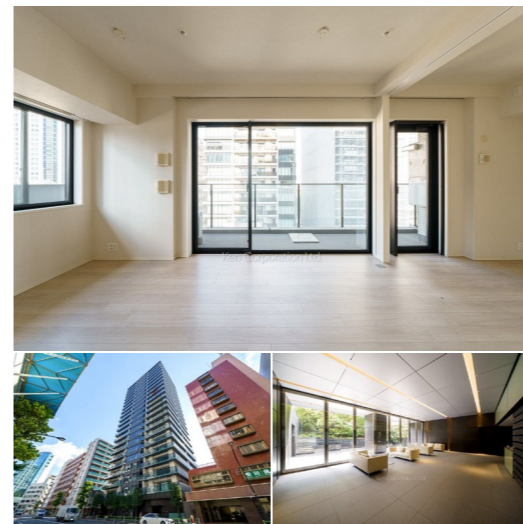


## Park Court Geo Nagata-cho 9 F

2 LDK / 75.39 sq.m | 218,000,000 JPY

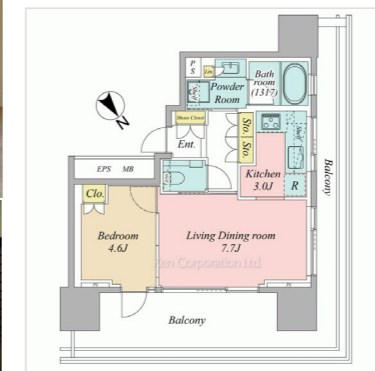


[Address] Nagata-cho 2-chome, Chiyoda-ku, Tokyo  
[Access to] - Hanzoumon Line Nagatacho Sta. / 3 min. walk  
- Marunouchi Line Akasaka-mitsuke Sta. / 6 min. walk  
[Construction] Level 9 of 14 story building Reinforced Concrete  
[Completion] March 2008 Completed  
[Land Rights] Ownership  
[Common Expense Fees] - Management Fee : 32,720 JPY / month  
- Building Repair Fund : 7,310 JPY / month



## Welith Tower Atago Toranomon 12 F

1 LDK / 37.63 sq.m | 115,000,000 JPY



[Address] Toranomon 3-chome, Minato-ku, Tokyo  
[Access to] - Hibiya Line Kamiyacho Sta. / 2 min. walk  
- Toei Mita Line Onarimon Sta. / 8 min. walk  
[Construction] Level 12 of 22 story building Reinforced Concrete  
[Completion] March 2014 Completed  
[Land Rights] Ownership  
[Common Expense Fees] - Management Fee : 13,650 JPY / month  
- Building Repair Fund : 5,080 JPY / month



Presented by

**KEN** Ken Corporation Ltd.

https://www.kencorp.com/  
2-7 NishiAzabu 1-chome, Minato-ku Tokyo, Japan  
Form of Transaction: Brokerage. Licensed by Minister of Land, Infrastructure, Transport, and Tourism (8) 4372



Disclaimers: ORIX Finance Services Hong Kong Limited is not licensed to deal with any property. ORIX Finance Services Hong Kong Limited is a money lender licensee. Money Lender License No: 1813/2002

**Warning : You have to repay your loans. Don't pay any intermediaries.**

Customer service/complaints hotline: (+852) 2732 1188